



The pervasive impact of wildlife and environmental crime seriously endangers Australia's unique landscapes and biodiversity, exposing us to potentially disastrous biosecurity risks, and threatening our livelihoods and wellbeing.

Globally, the value of illegal wildlife crime is estimated at \$30-100b per annum.

It's time we met the threat

2 million people are estimated to be involved in wildlife crime globally, with a significant proportion of these individuals being women and children. Wildlife crime is a multi-billion dollar industry, with a significant portion of the profits being used to fund terrorism and organized crime.

Understanding the scale and complexity of wildlife crime is essential for developing effective strategies to combat it.

Wildlife crime is a global issue that requires international cooperation and coordination to address effectively.

Innovation in wildlife crime enforcement, such as the use of artificial intelligence and data analytics, is crucial for identifying and disrupting criminal networks.

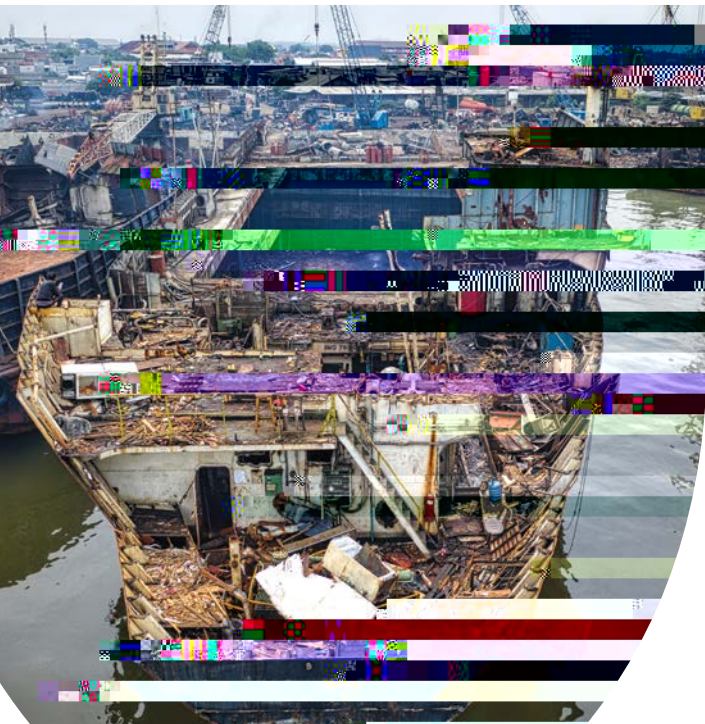
Enforcement of wildlife crime laws is a complex task that requires a multi-agency approach, involving law enforcement, customs, and border agencies.

Wildlife protection is a key component of any strategy to combat wildlife crime, as it helps to reduce the demand for illegal wildlife products.

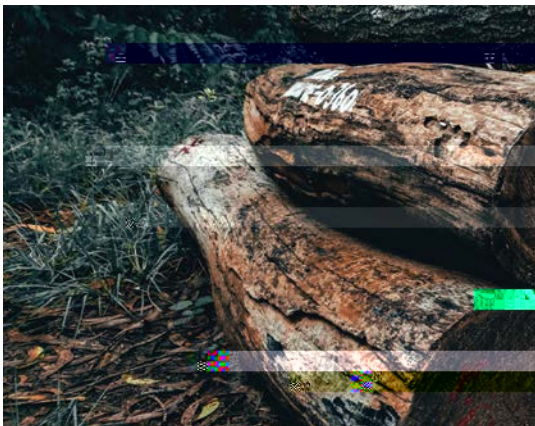
Wildlife crime is a global issue that requires international cooperation and coordination to address effectively. It is a multi-billion dollar industry, with a significant portion of the profits being used to fund terrorism and organized crime. Understanding the scale and complexity of wildlife crime is essential for developing effective strategies to combat it. Innovation in wildlife crime enforcement, such as the use of artificial intelligence and data analytics, is crucial for identifying and disrupting criminal networks. Enforcement of wildlife crime laws is a complex task that requires a multi-agency approach, involving law enforcement, customs, and border agencies. Wildlife protection is a key component of any strategy to combat wildlife crime, as it helps to reduce the demand for illegal wildlife products.

Wildlife crime is a global issue that requires international cooperation and coordination to address effectively. It is a multi-billion dollar industry, with a significant portion of the profits being used to fund terrorism and organized crime. Understanding the scale and complexity of wildlife crime is essential for developing effective strategies to combat it. Innovation in wildlife crime enforcement, such as the use of artificial intelligence and data analytics, is crucial for identifying and disrupting criminal networks. Enforcement of wildlife crime laws is a complex task that requires a multi-agency approach, involving law enforcement, customs, and border agencies. Wildlife protection is a key component of any strategy to combat wildlife crime, as it helps to reduce the demand for illegal wildlife products.

Wildlife crime is a global issue that requires international cooperation and coordination to address effectively. It is a multi-billion dollar industry, with a significant portion of the profits being used to fund terrorism and organized crime. Understanding the scale and complexity of wildlife crime is essential for developing effective strategies to combat it. Innovation in wildlife crime enforcement, such as the use of artificial intelligence and data analytics, is crucial for identifying and disrupting criminal networks. Enforcement of wildlife crime laws is a complex task that requires a multi-agency approach, involving law enforcement, customs, and border agencies. Wildlife protection is a key component of any strategy to combat wildlife crime, as it helps to reduce the demand for illegal wildlife products.



Wildlife crime is a global issue that requires international cooperation and coordination to address effectively. It is a multi-billion dollar industry, with a significant portion of the profits being used to fund terrorism and organized crime. Understanding the scale and complexity of wildlife crime is essential for developing effective strategies to combat it. Innovation in wildlife crime enforcement, such as the use of artificial intelligence and data analytics, is crucial for identifying and disrupting criminal networks. Enforcement of wildlife crime laws is a complex task that requires a multi-agency approach, involving law enforcement, customs, and border agencies. Wildlife protection is a key component of any strategy to combat wildlife crime, as it helps to reduce the demand for illegal wildlife products.





Further enquired 7) (1)1rp0 1 8cv)49168 Tm

### Karna acknowledgement

Handwritten text in Kannada script, likely an acknowledgment or receipt, written in black ink on a white background. The text is dense and appears to be a formal document, possibly a receipt or a letter of acknowledgment. The handwriting is somewhat cursive and difficult to read precisely, but it seems to contain several lines of text, possibly including names, dates, and details of the transaction or acknowledgment.